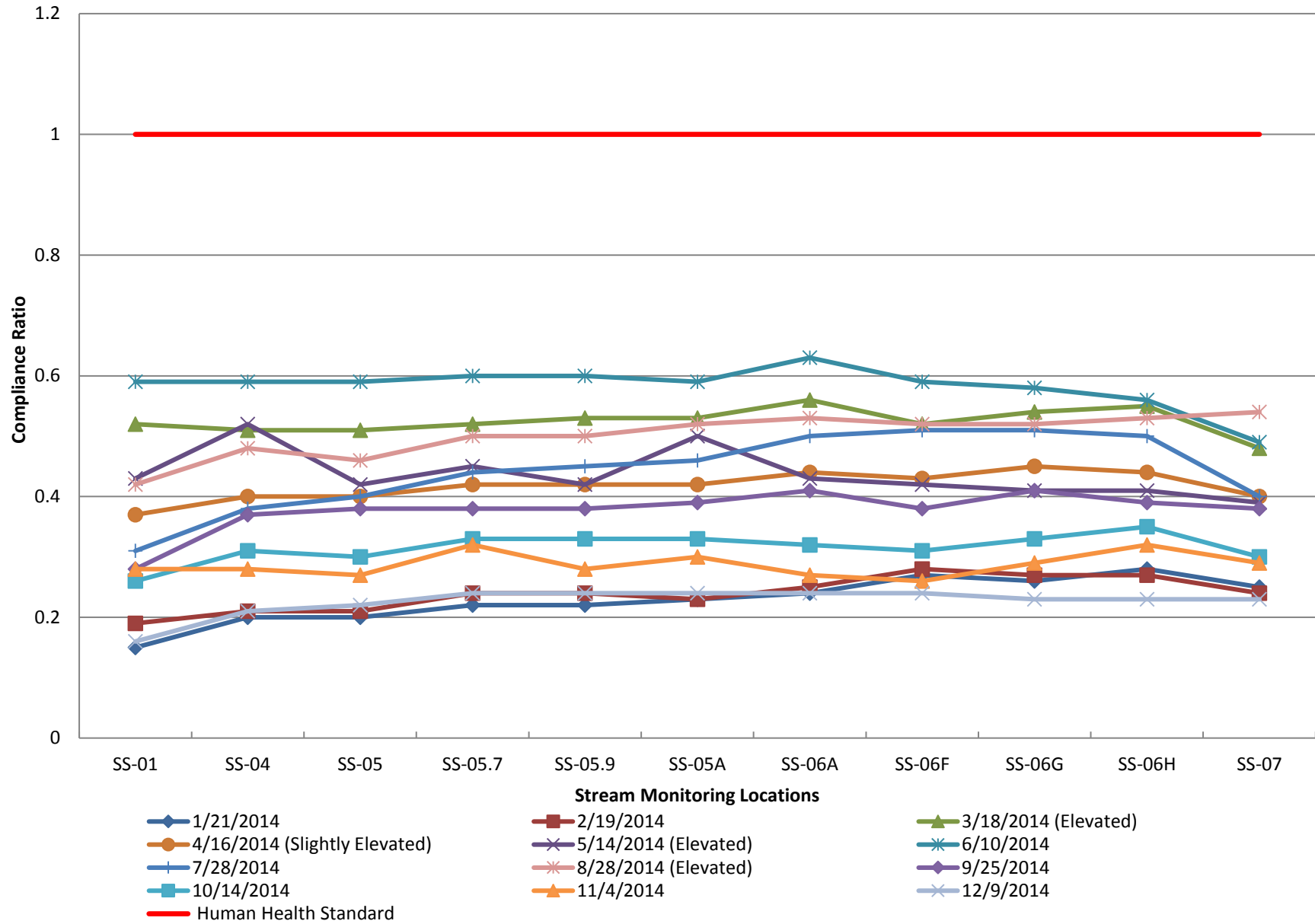
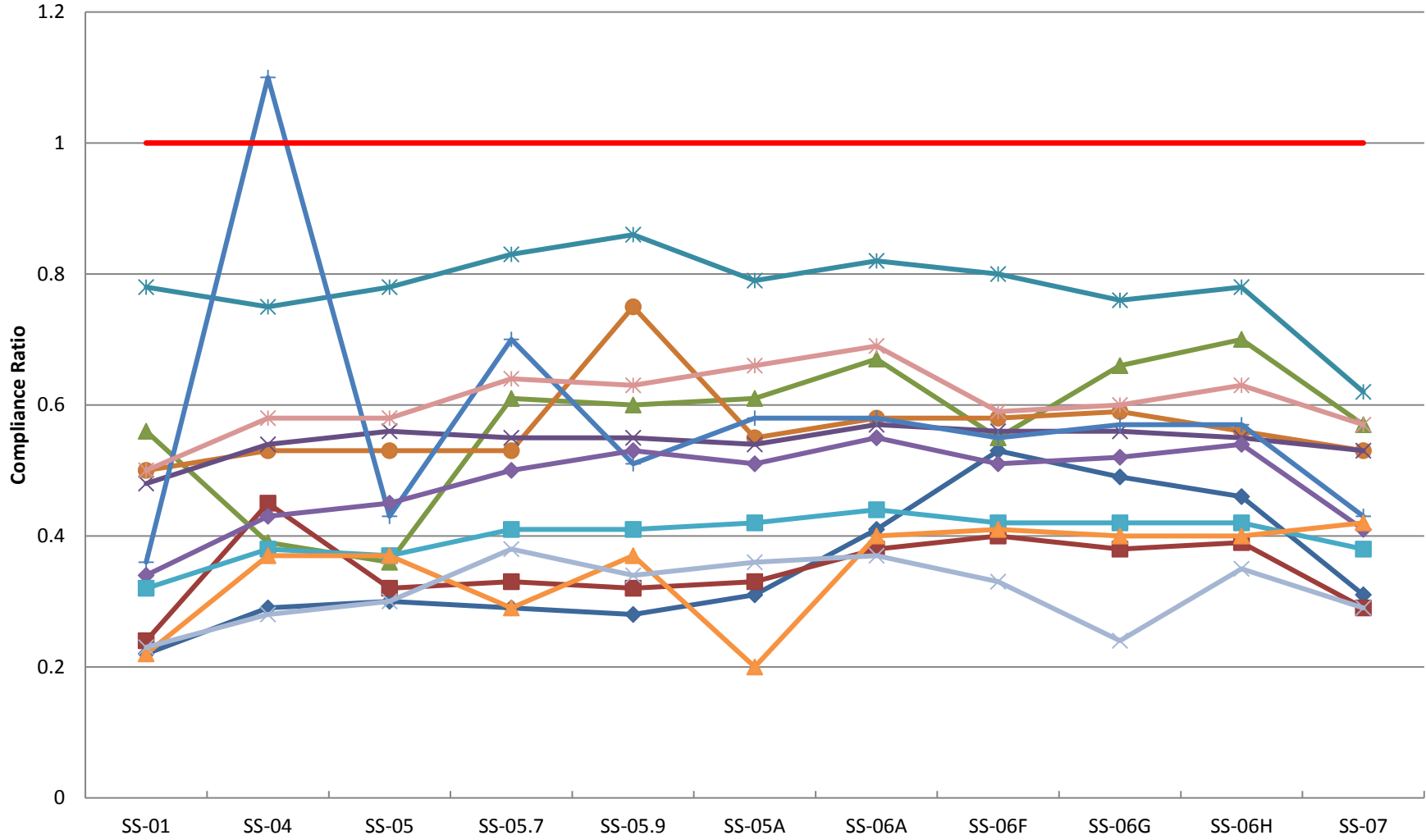


2014 Dissolved Arsenic Compliance Ratios (Base Flow)



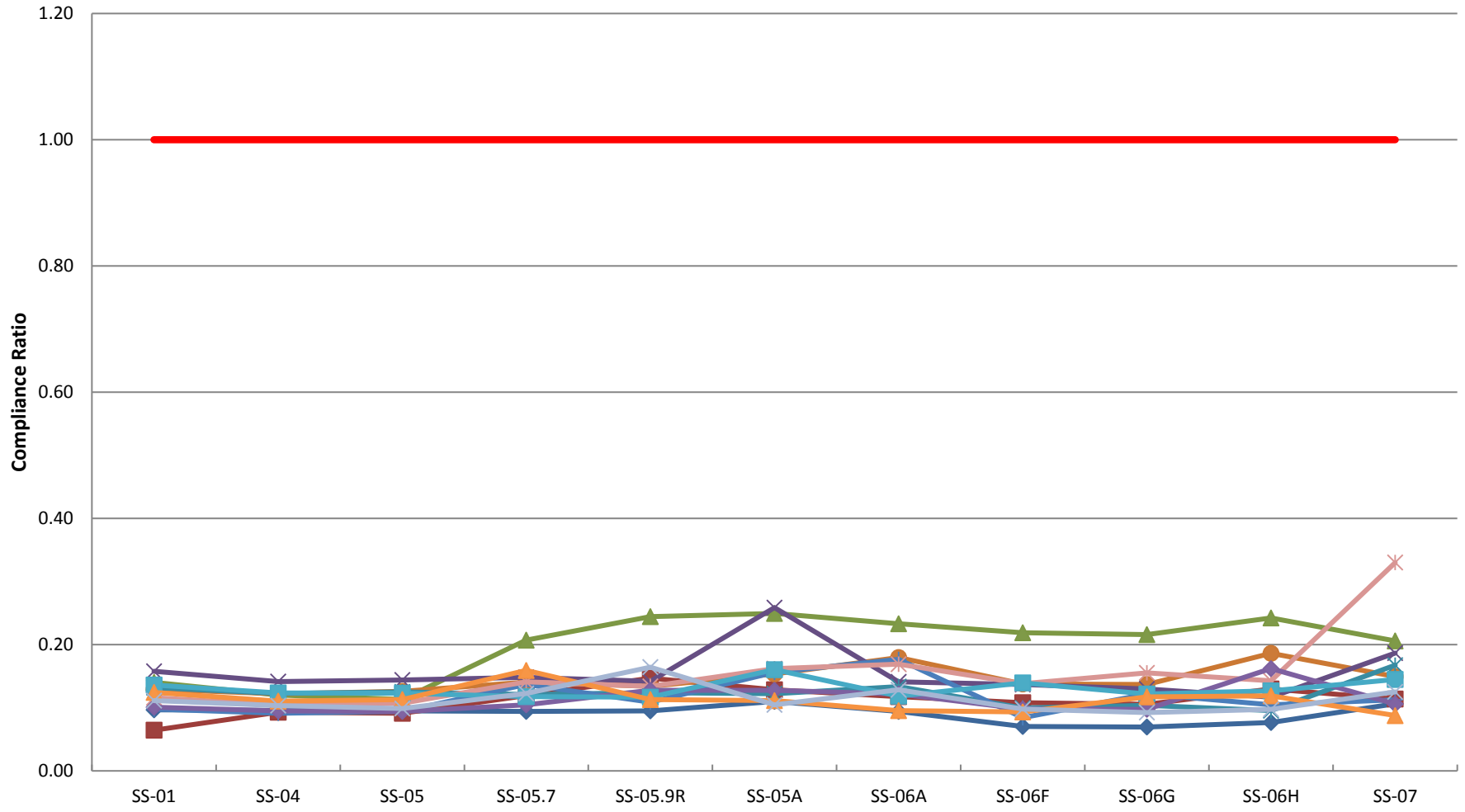
The Compliance Ratio is equal to the analyte concentration (value) divided by the constituents aquatic life standard (CR= Value/Standard). The standard is represented as a compliance ratio of one.

2014 Total Recoverable Arsenic Compliance Ratios (Base Flow)



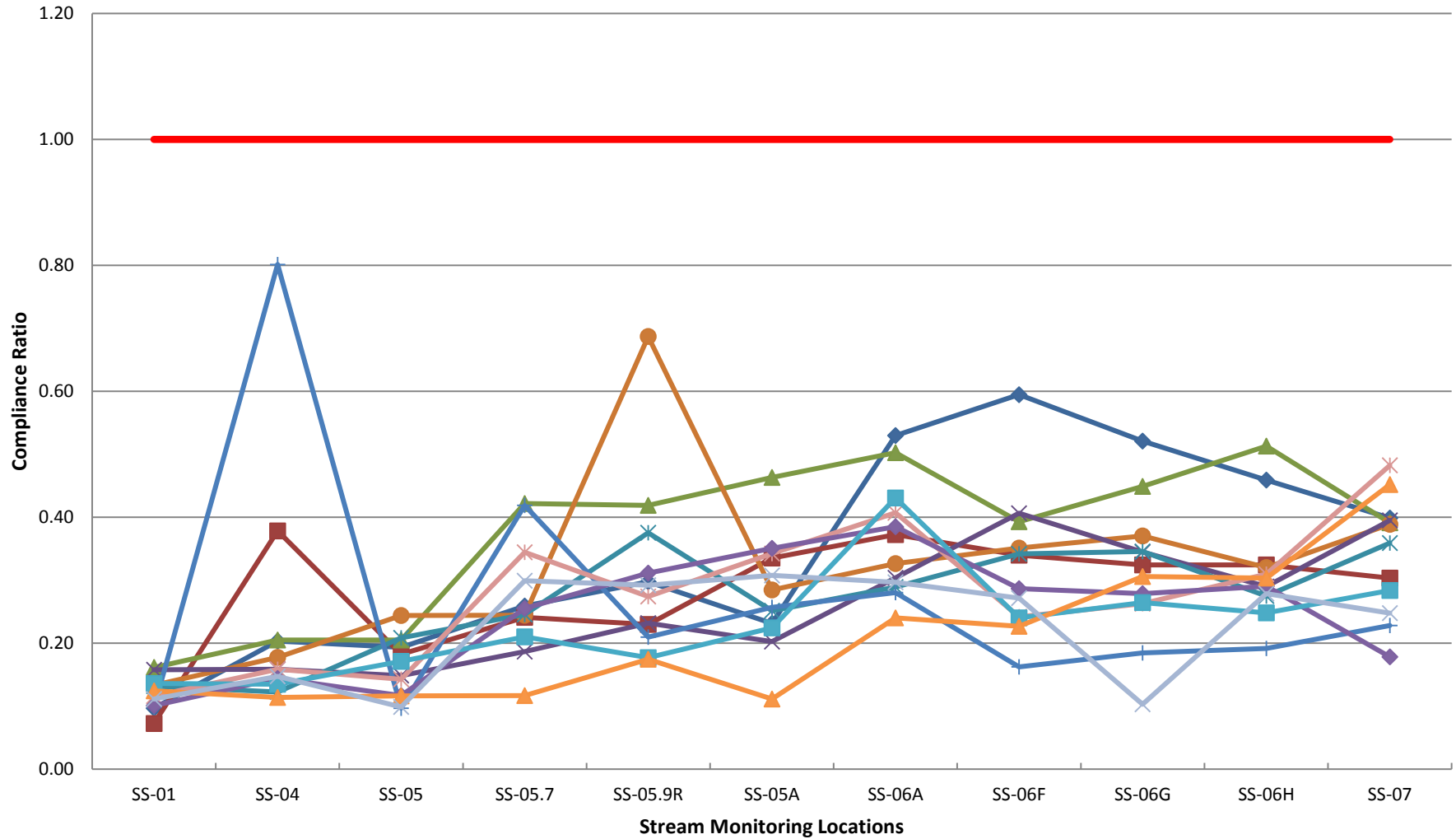
- Stream Monitoring Locations**
- ◆ 1/21/2014
 - 2/19/2014
 - ▲ 3/18/2014 (Elevated)
 - 4/16/2014 (Slightly Elevated)
 - ✕ 5/14/2014 (Elevated)
 - ✱ 6/10/2014
 - + 7/28/2014
 - ✱ 8/28/2014 (Elevated)
 - ◆ 9/25/2014
 - 10/14/2014
 - ▲ 11/4/2014
 - ✕ 12/9/2014
 - Human Health Standard

2014 Dissolved Cadmium Compliance Ratios (Base Flow)



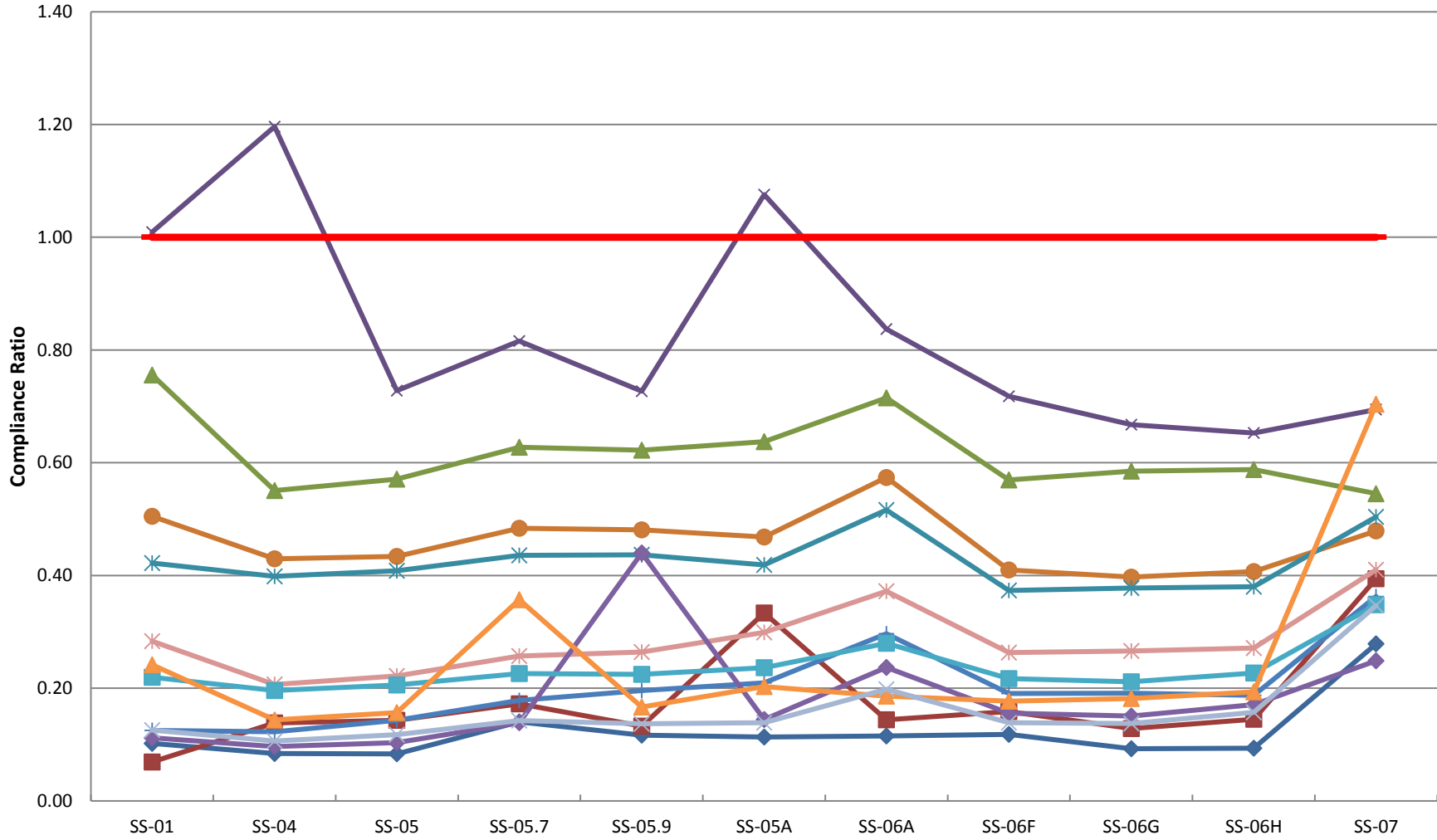
- ◆ 1/21/2014
- ◆ 2/19/2014
- ▲ 3/18/2014 (Elevated)
- 4/16/2013 (Slightly Elevated)
- 4/16/2014
- 5/14/2014 (Elevated)
- 6/10/2014
- 7/28/2014
- 8/28/2014 (Elevated)
- 9/25/2014
- 10/14/2014
- 11/4/2014
- 12/9/2014
- Chronic Standard

2014 Total Recoverable Cadmium Compliance Ratios (Base Flow)



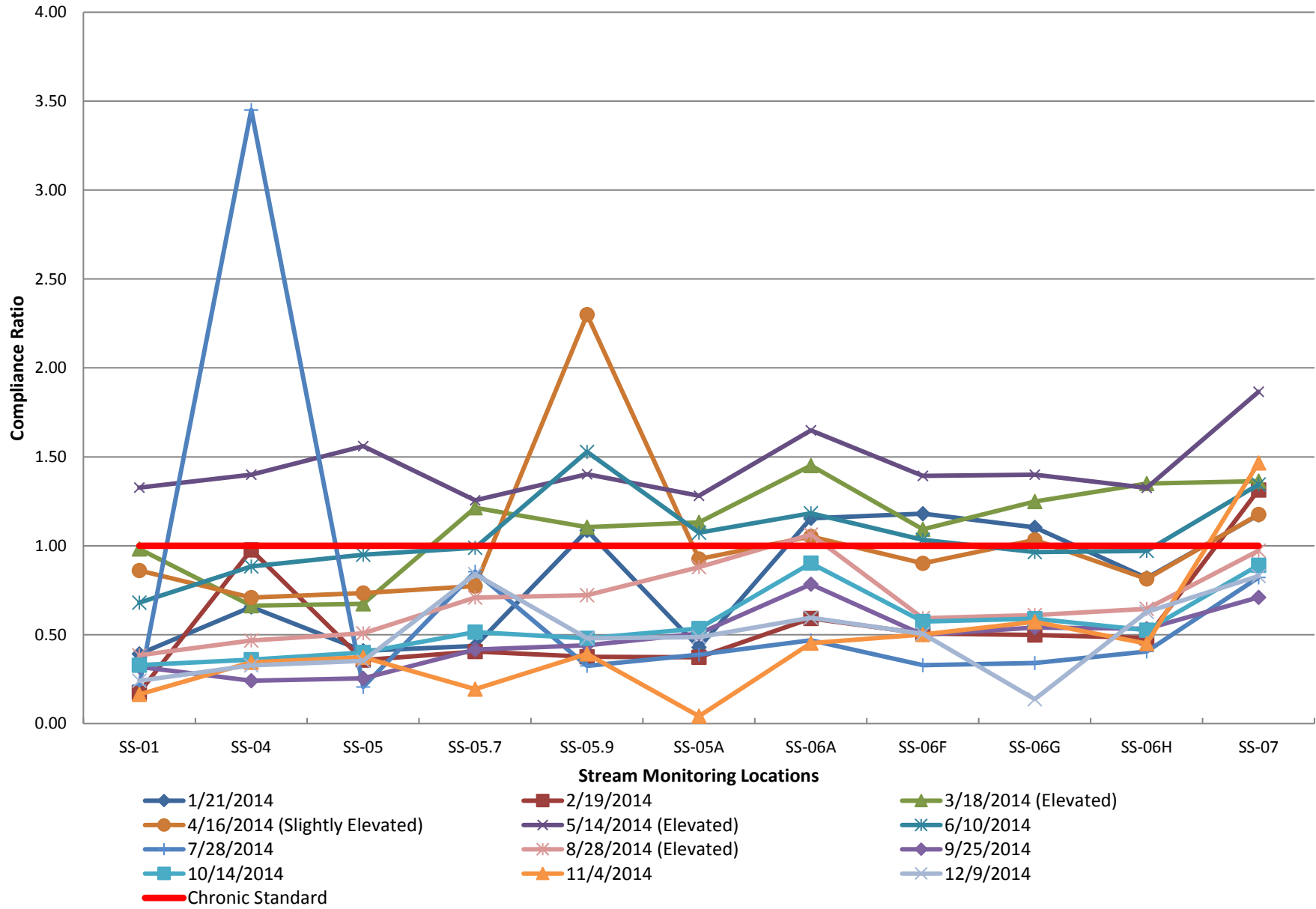
- ◆ 1/21/2014
- 4/16/2014 (Slightly Elevated)
- + 7/28/2014
- 10/14/2014
- Chronic Standard
- 2/19/2014
- × 5/14/2014 (Elevated)
- × 8/28/2014 (Elevated)
- ▲ 11/4/2014
- ▲ 3/18/2014 (Elevated)
- × 6/10/2014
- ◆ 9/25/2014
- × 12/9/2014

2014 Dissolved Copper Compliance Ratios (Base Flow)

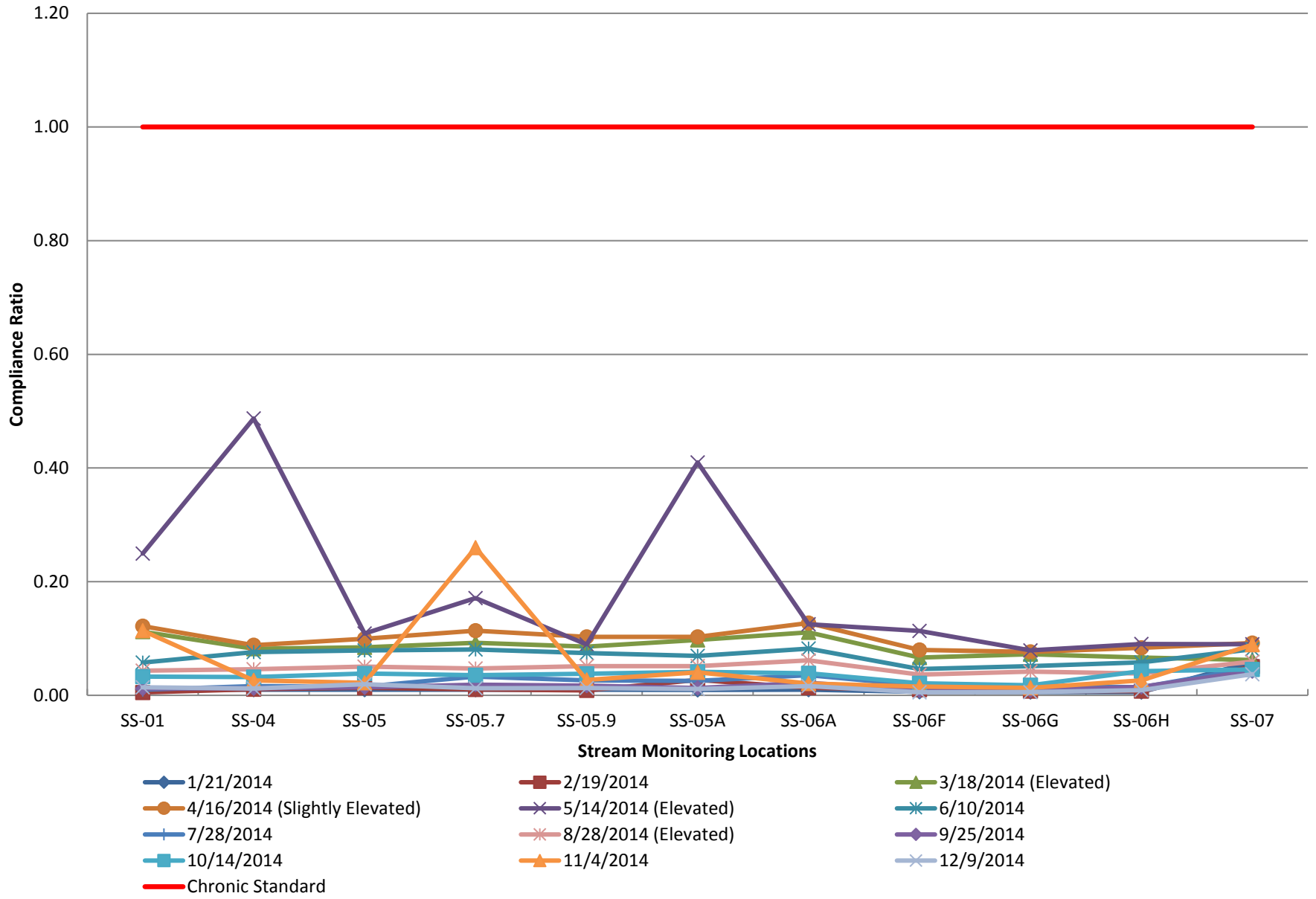


- Stream Monitoring Locations**
- ◆ 1/21/2014
 - 2/19/2014
 - ▲ 3/18/2014 (Elevated)
 - 4/16/2014 (Slightly Elevated)
 - ✕ 5/14/2014 (Elevated)
 - ✱ 6/10/2014
 - + 7/28/2014
 - ✱ 8/28/2014 (Elevated)
 - ◆ 9/25/2014
 - 10/14/2014
 - ▲ 11/4/2014
 - ✕ 12/9/2014
 - Chronic Standard

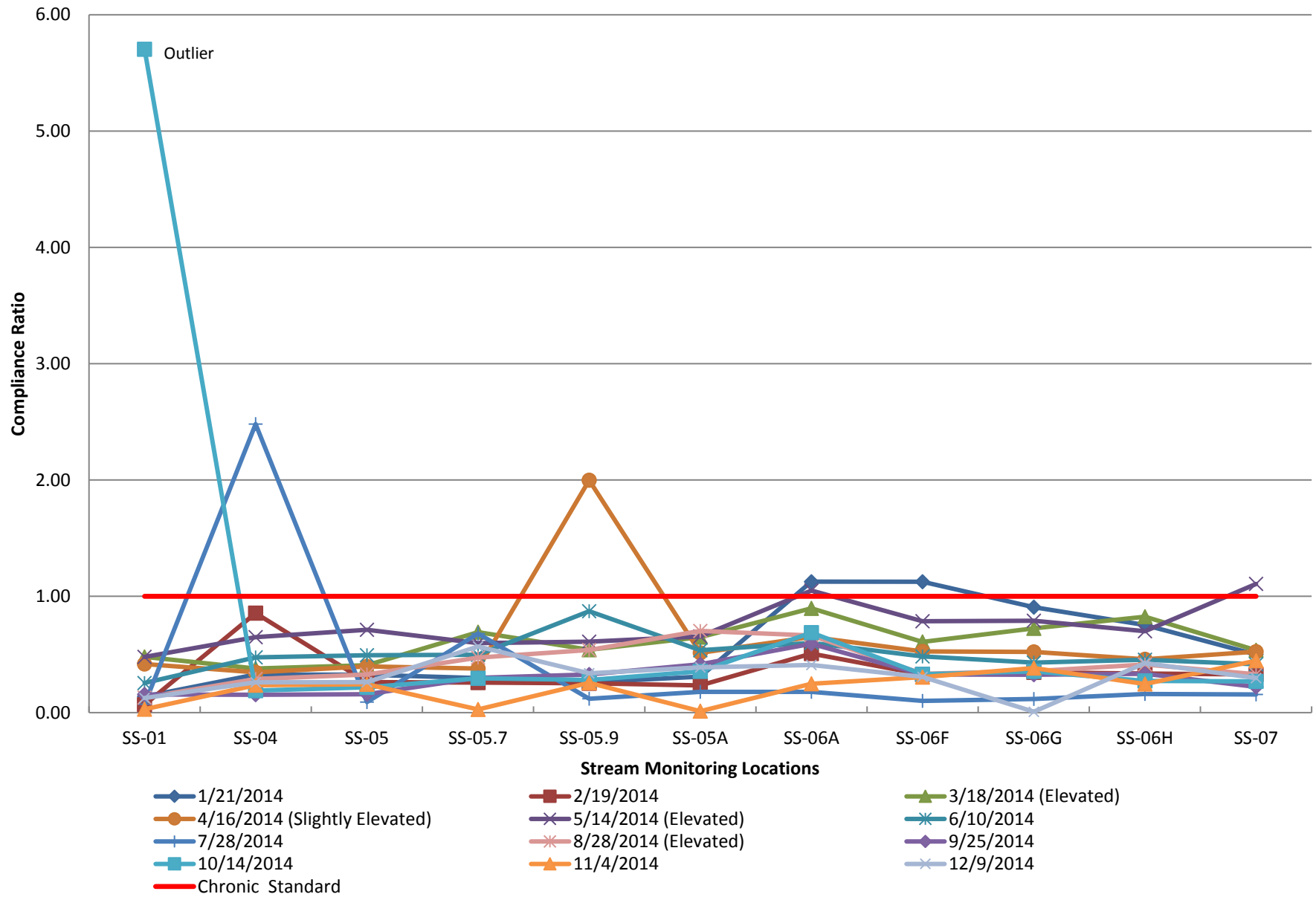
2014 Total Recoverable Copper Compliance Ratios (Base Flow)



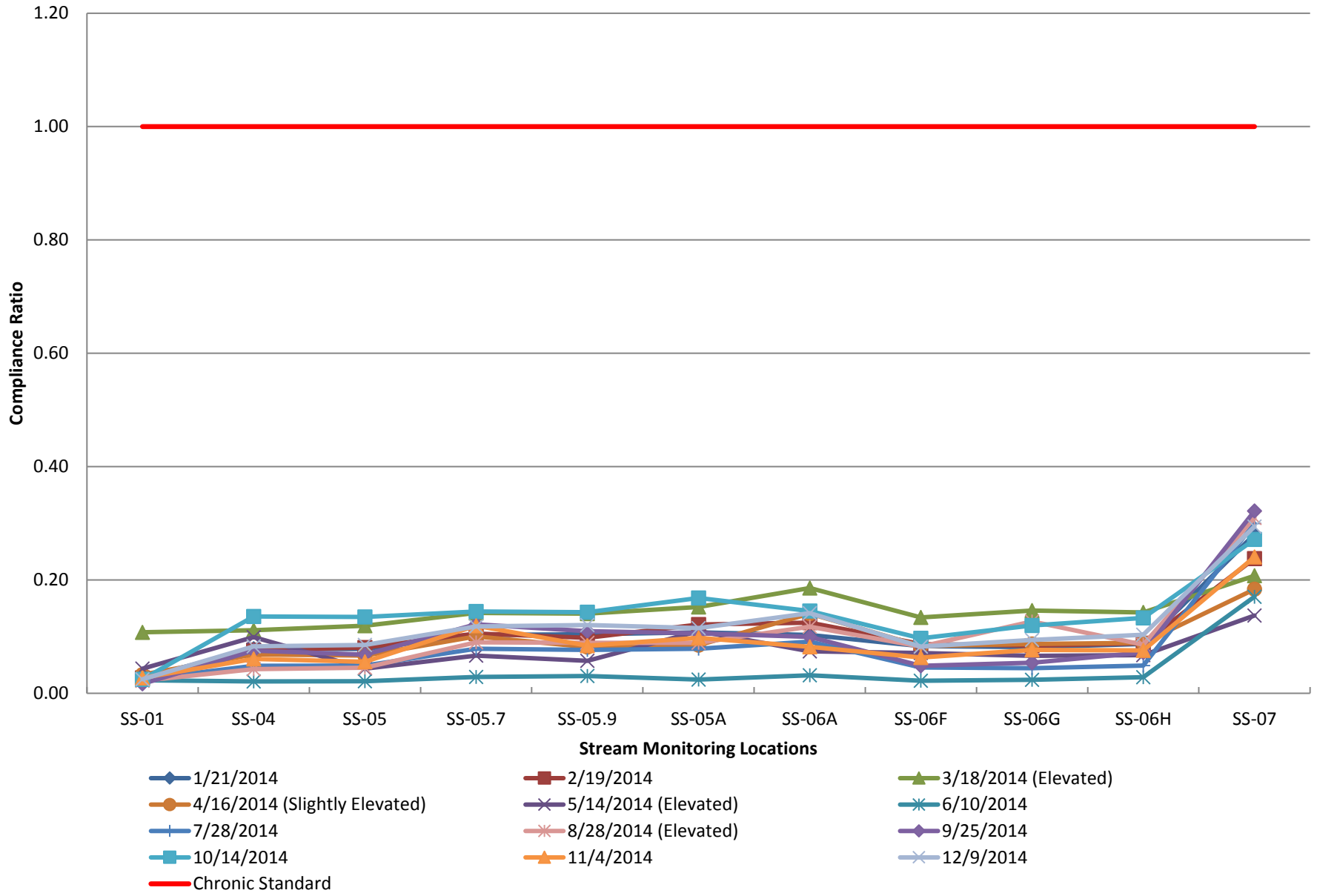
2014 Dissolved Lead Compliance Ratios (Base Flow)



2014 Total Recoverable Lead Compliance Ratios (Base Flow)



2014 Dissolved Zinc Compliance Ratios (Base Flow)



2014 Total Recoverable Zinc Compliance Ratios (Base Flow)

