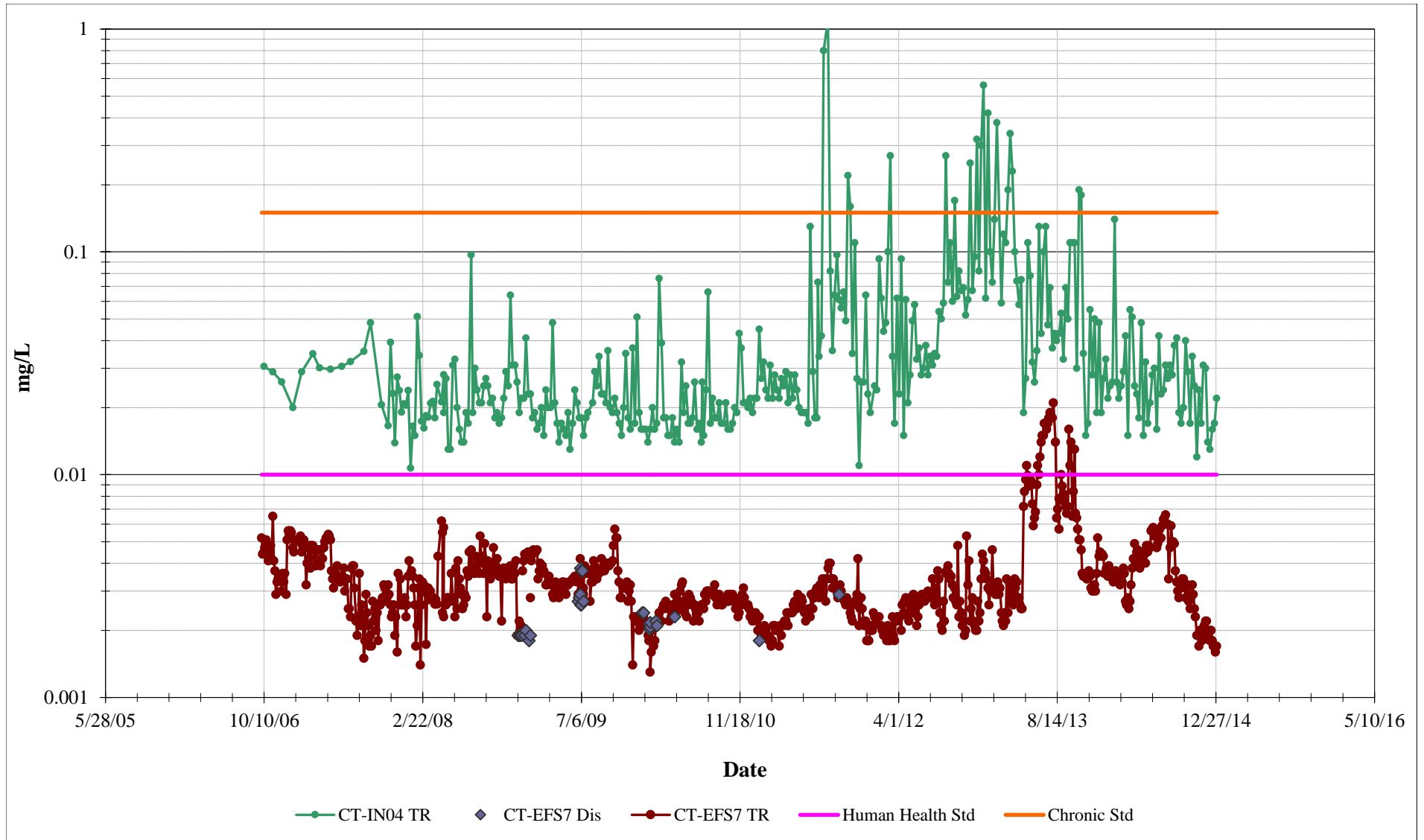
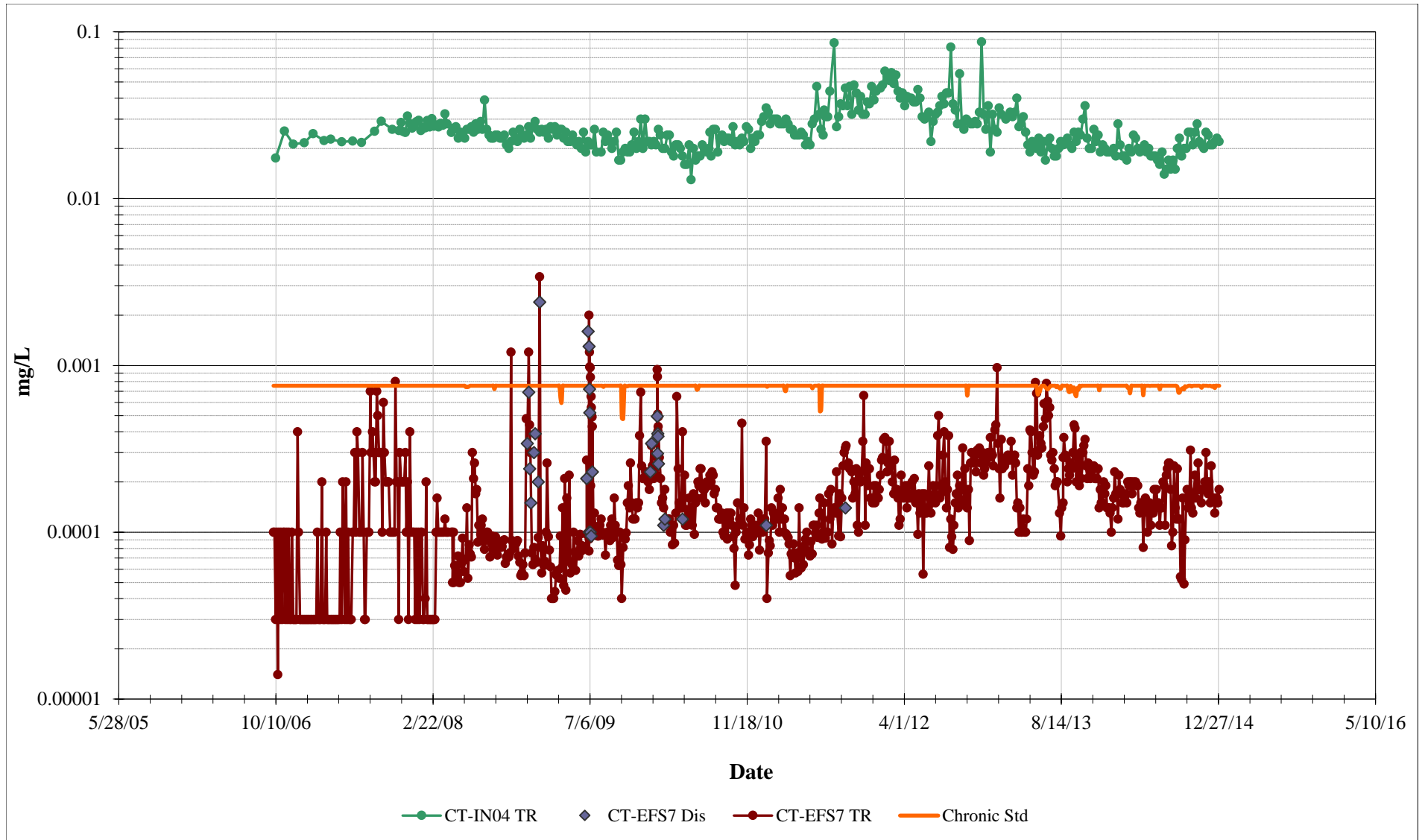


Butte Treatment Lagoon System Arsenic Concentration



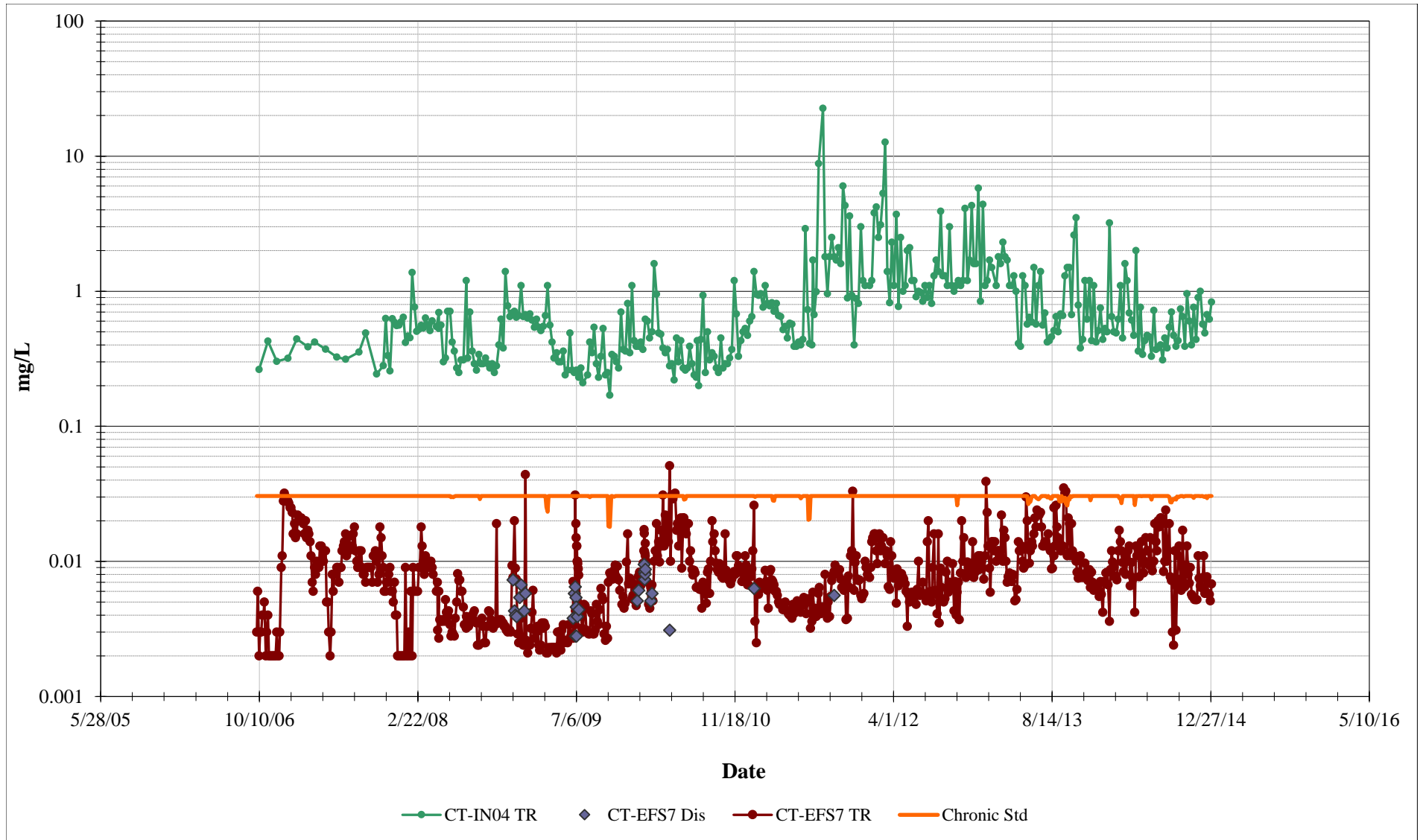
Arsenic maximum standard is DEQ-7 Human Health standard.
 CT-EFS7 (Effluent Station)
 CT-IN04 (Influent Station)

Butte Treatment Lagoon System Cadmium Concentration



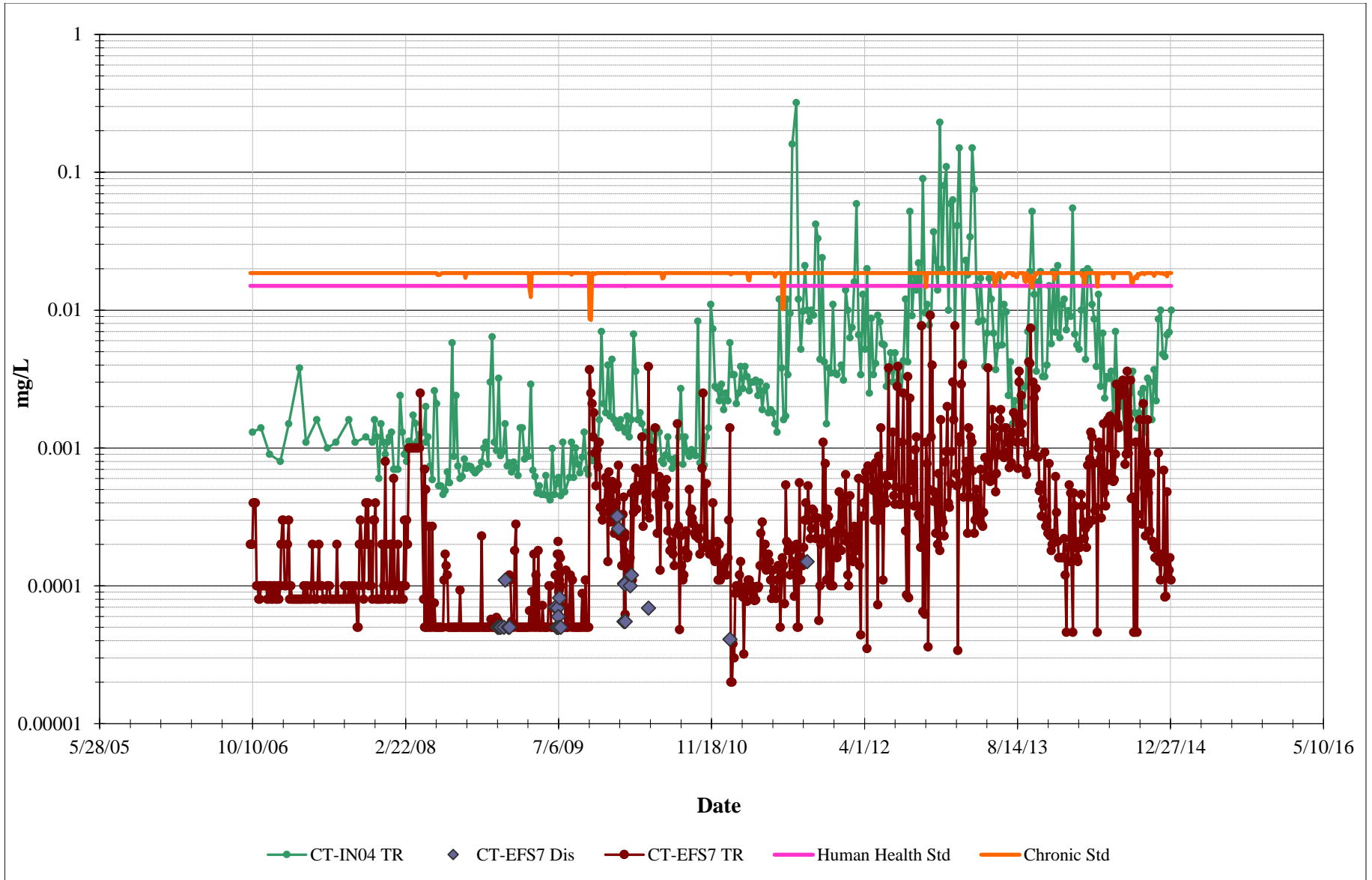
Cadmium maximum standard is DEQ-7 Chronic Aquatic standard calculated based on effluent (CT-EFS7) hardness.

Butte Treatment Lagoon System Copper Concentration



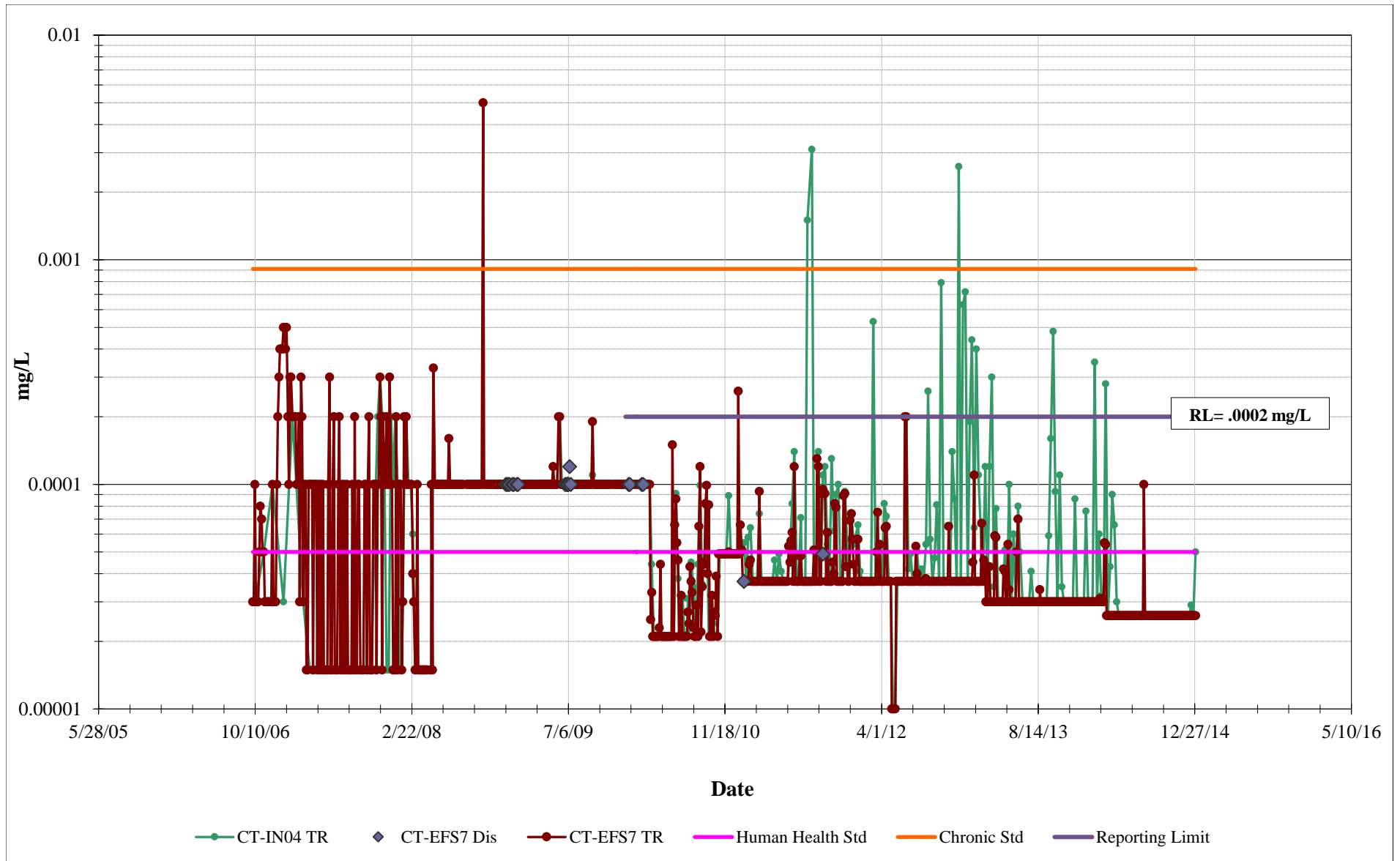
Copper maximum standard is DEQ-7 Chronic Aquatic Life standard calculated based on effluent (CT-EFS7) hardness.

Butte Treatment Lagoon System Lead Concentration



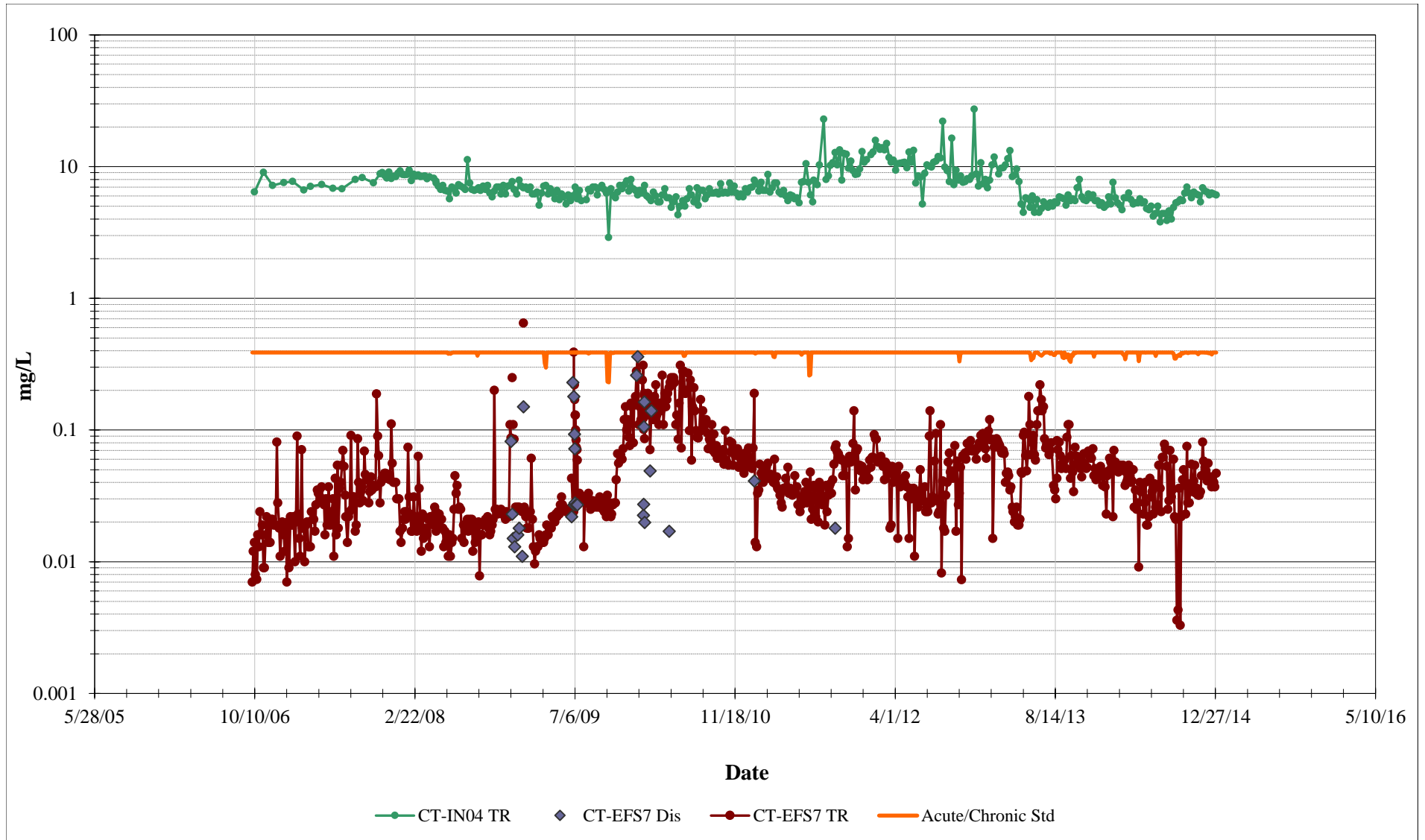
Lead maximum standard is DEQ-7 Human Health standard. Chronic Aquatic Life standard calculated based on effluent (CT-EFS7) hardness.

Butte Treatment Lagoon System Mercury Concentration



Mercury maximum standard is DEQ-7 Human Health standard.

Butte Treatment Lagoon System Zinc Concentration



Zinc maximum standard is DEQ-7 Acute/Chronic standard calculated based on effluent (CT-EFS7) hardness.